

1 Desk 3D

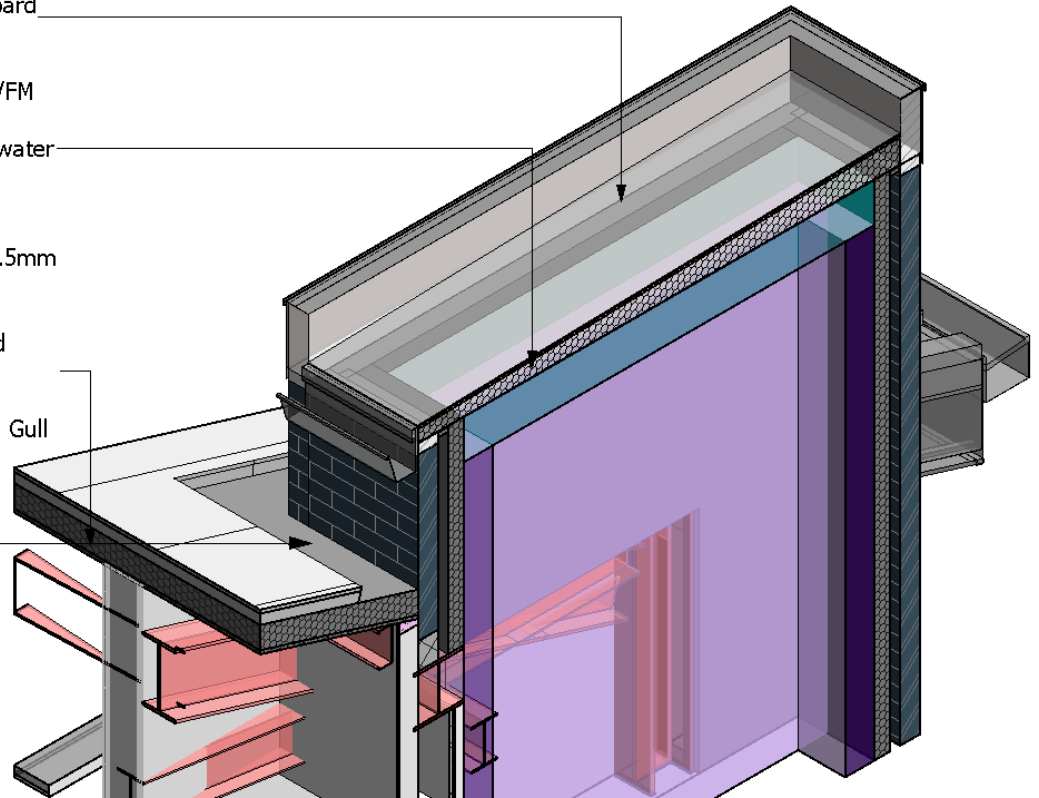


GRP roof finish applied to OSB board
Spec Ref: M50/150

Kingspan Thermataper TT46 LPC/FM
high performance rigid tapered
thermoset insulation to enhance water
drainage from flat roofs
Spec Ref: J42/420

Kingspan Kingzip 'KS500ZIP-IP' 0.5mm
thick galvanised steel composite
standing seam roof system with
124mm thick PIR LPC-B approved
insulation core
U-Value: 0.18W/m²K
Finish: Kingspan XL-Forte Colour: Gull
Grey (RAL 240 80 05)
Spec Ref: H43/125

KingZip gutter



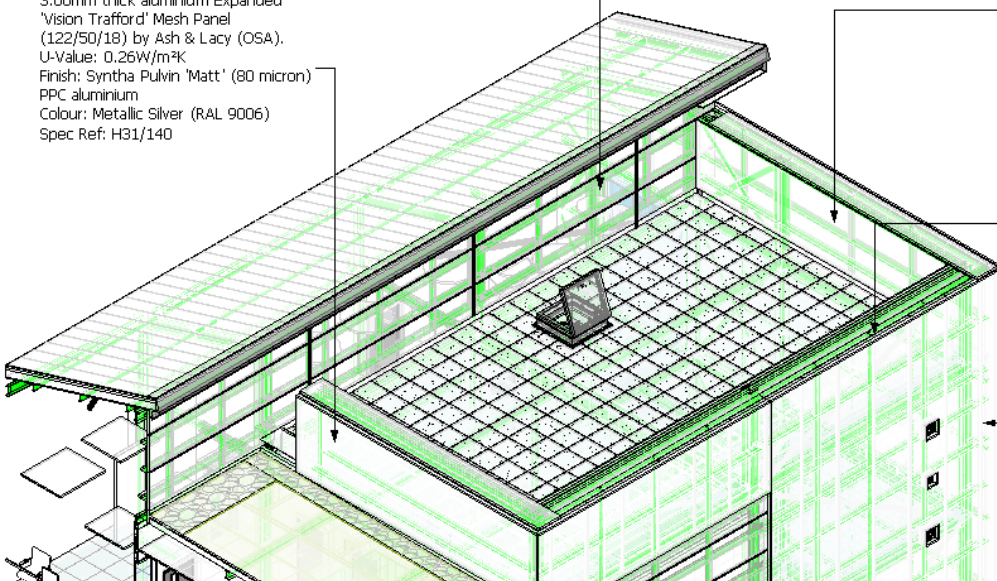
Kingspan 'KS1000-FL-S' 0.5mm thick
galvanised steel flat composite
architectural wall cladding panels with
80mm thick PIR LPCB approved core,
horizontally laid
U-Value: 0.26W/m²K
Finish: Kingspan Spectrum Stucco
finish
Colour: Onyx (RAL 7000)
Spec Ref: H43/125

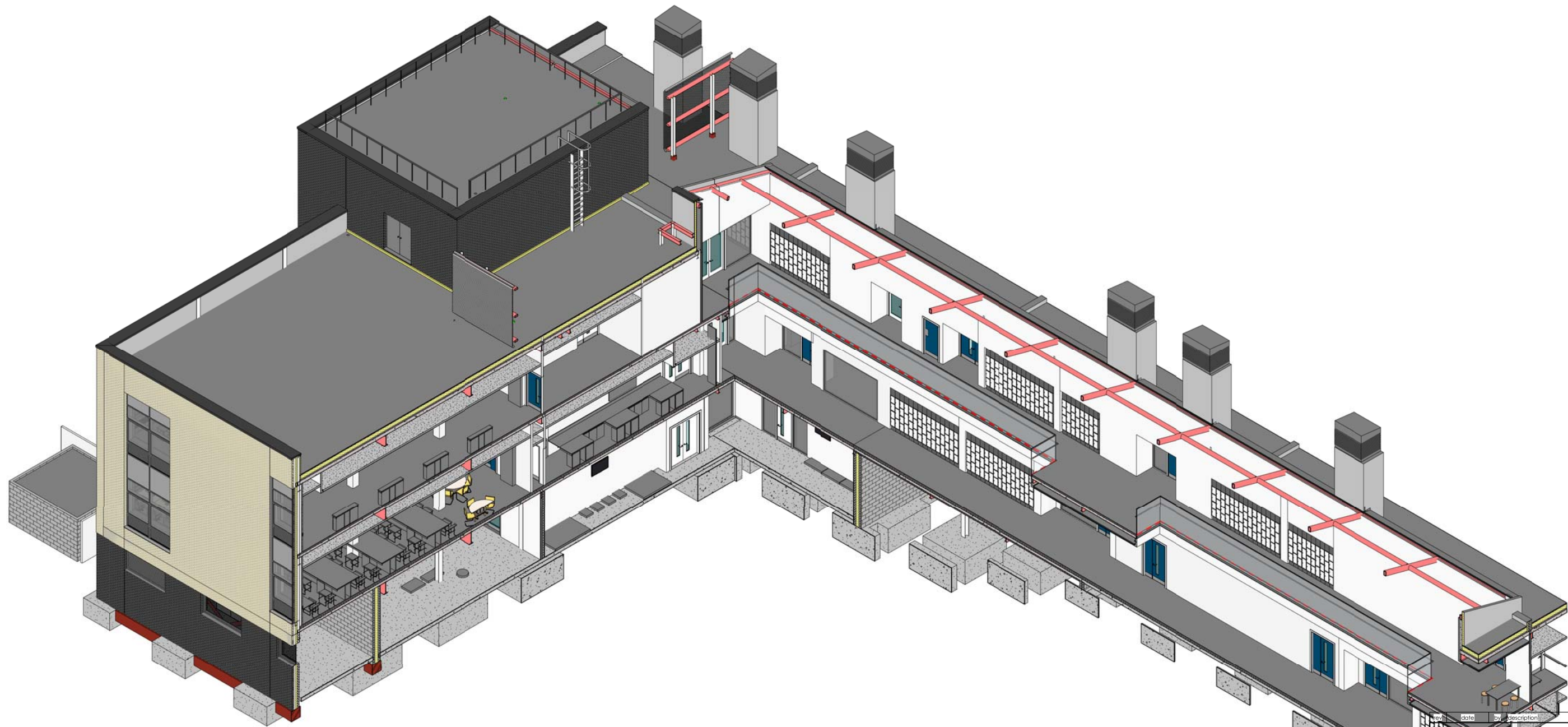
3.00mm thick aluminium Expanded
'Vision Trafford' Mesh Panel
(122/50/18) by Ash & Lacy (OSA).
U-Value: 0.26W/m²K
Finish: Syntha Pulvin 'Matt' (80 micron)
PPC aluminium
Colour: Metallic Silver (RAL 9006)
Spec Ref: H31/140

Kingspan 'KS1000RW' 0.5mm thick
galvanised steel trapezoidal composite
architectural wall cladding panels with
80mm thick PIR LPCB approved core,
horizontally laid
U-Value: 0.25W/m²K
Finish: Kingspan Spectrum
Colour: Onyx (RAL 7000)
Spec Ref: H43/125

Kingspan QuadCore Karrier panels
0.63mm Thick Galvanised Steel Outer
Sheet 80mm Thick Coat Horizontally
Laid.
Finish: Kingspan XL Forte
Colour: Merlin Grey (RAL 180 40 05 -
BS 18B25)
U value: 0.26W/m²K
Spec Ref: H43/122

3.00mm thick aluminium Expanded
'Vision Trafford' Mesh Panel
(122/50/18) by Ash & Lacy (OSA).
U-Value: 0.26W/m²K
Finish: Syntha Pulvin 'Matt' (80 micron)
PPC aluminium
Colour: Metallic Silver (RAL 9006)
Spec Ref: H31/140





2 GRID M

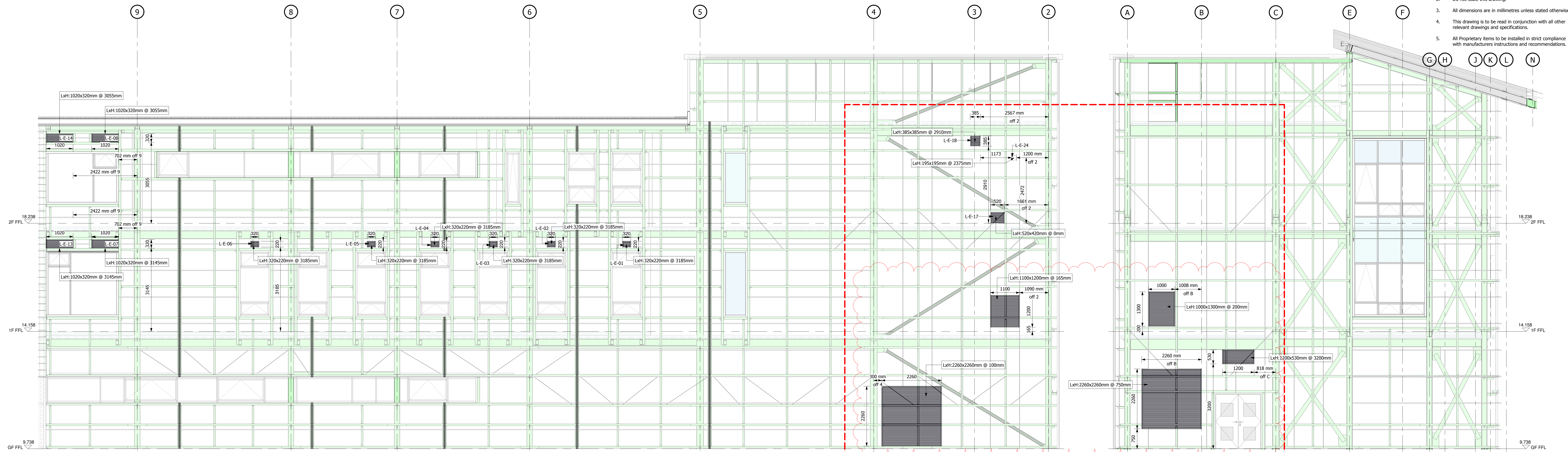
1 GRID 11

new date by description checked
 cpmg ARCHITECTURE INTERIOR DESIGN VISUALISATION
 CPMG Architects Ltd 23 Waver Gate Nottingham NG1 1NJ
 telephone: 0115 958 9500 email: nottingham@cpmg-architects.com
 www.cpmg-architects.com

job title			
STEMLabs - Loughborough University			
drawing title			
L-Shaped Section			
drawing status			
SKETCH			
drawn by	date	checked by	scale
job no.	drawing no.	revision	media
7874	SK-000		A1
<small>Copyright of CPMG Architects Limited 2015. All rights reserved. No part of this publication may be reproduced, stored in any retrieval system or transmitted in any form by any means without prior permission of CPMG Architects Limited. Do not scale from drawing, use figured dimensions only. All dimensions to be checked on site.</small>			
<small>ISO 9001 QUALITY MANAGEMENT 14001 ENVIRONMENTAL MANAGEMENT</small>			



- Notes**
- If in doubt, ask the Project Lead.
 - Do not scale this drawing.
 - All dimensions are in millimetres unless stated otherwise.
 - This drawing is to be read in conjunction with all other relevant drawings and specifications.
 - All Proprietary items to be installed in strict compliance with manufacturers instructions and recommendations.



LOUVRES-N-Structure
1 : 50

LOUVRES-W-Structure
1 : 50

LOUVRES CLEAR OPENING COMPENSATED FOR EXTERNAL MESH BY 25% AS REQUESTED BY MECHFS

A - Louvres - External (Size in mm)						
Mark	Comments	Structural Opening Width	Structural Opening Height	Clear Opening Width	Clear Opening Height	Clear Area
L-E-01	To be trimmed out by cleader angles, structural opening: 320x220	320	220	300	200	0.060 m ²
L-E-02	To be trimmed out by cleader angles, structural opening: 320x220	320	220	300	200	0.060 m ²
L-E-03	To be trimmed out by cleader angles, structural opening: 320x220	320	220	300	200	0.060 m ²
L-E-04	To be trimmed out by cleader angles, structural opening: 320x220	320	220	300	200	0.060 m ²
L-E-05	To be trimmed out by cleader angles, structural opening: 320x220	320	220	300	200	0.060 m ²
L-E-06	To be trimmed out by cleader angles, structural opening: 320x220	320	220	300	200	0.060 m ²
L-E-07	Size requested by MechFS: 1000x300	1020	320	1000	300	0.300 m ²
L-E-08	Size requested by MechFS: 1000x300	1020	320	1000	300	0.300 m ²
L-E-09	Size requested by MechFS: 1000x300. Oversized to compensate for head PFC 35mm within opening	1000	500	980	445	0.436 m ²
L-E-10	Size requested by MechFS: 1000x300. Oversized to compensate for head PFC 35mm within opening	1000	500	980	445	0.436 m ²
L-E-11	Size requested by MechFS: 1000x300	1000	500	980	480	0.470 m ²
L-E-12	Size requested by MechFS: 1000x300	1000	500	980	480	0.470 m ²
L-E-13	Size requested by MechFS: 1000x300	1020	320	1000	300	0.300 m ²
L-E-14	Size requested by MechFS: 1000x300	1020	320	1000	300	0.300 m ²
L-E-15	25% oversized and 10mm tolerance each side included	2260	2260	2240	2240	5.018 m ²
L-E-16	25% oversized and 10mm tolerance each side included	1100	1200	1080	1180	1.274 m ²
L-E-17	25% oversized and 10mm tolerance each side included	520	420	500	400	0.200 m ²
L-E-18	25% oversized and 10mm tolerance each side included	385	385	365	365	0.133 m ²
L-E-19	Extract fan, structural opening: 380x480 - East elevation	400	500	380	480	0.182 m ²
L-E-20	Extract fan, structural opening: 380x480 - East elevation	400	500	380	480	0.182 m ²
L-E-21	25% oversized and 10mm tolerance each side included	2260	2260	2240	2240	5.018 m ²
L-E-22	25% oversized and 10mm tolerance each side included	1000	1300	980	1280	1.254 m ²
L-E-23	25% oversized and 10mm tolerance each side included	1200	530	1180	510	0.602 m ²
L-E-24	Flue opening Ø175mm + 10 tolerance around	195	195	175	175	0.031 m ²
Grand total: 24						

Rev	Amendments	By	Date
C02	Levels changed to datum. Extra items added for clarity.	MB	06.02.19
C01	L-E-09 & 10 incorporate 35mm drop in head PFC.	MB	06.02.19

Client: **ALL WAYS SAFETY** **Network Rail**

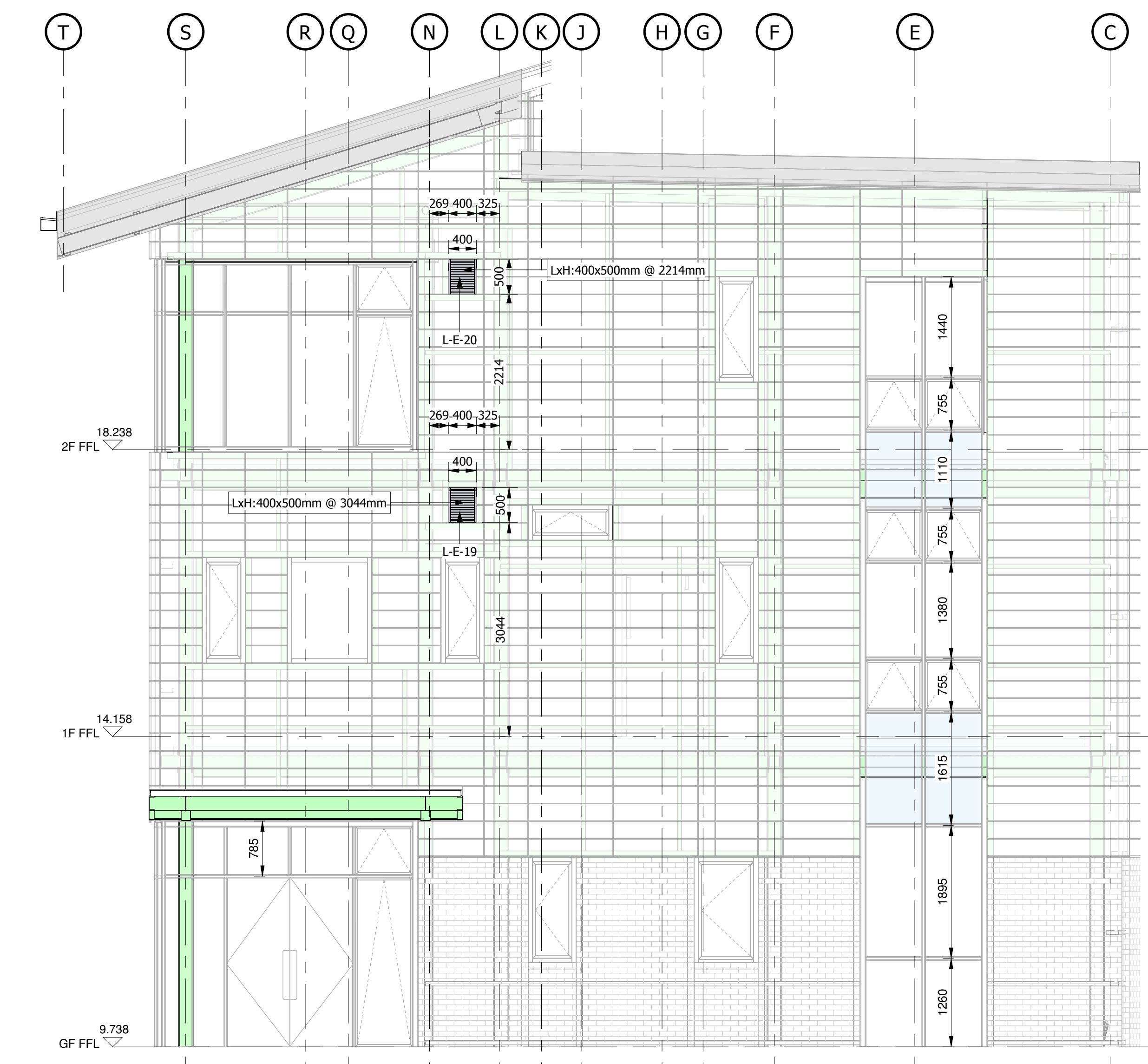
Project: **Network Rail Project Number: 3309434**
Buckingham Group - Doncaster DU
Improvement Programme LNE-EM

Title: **Elevations - Louvres**

Project	Originator	Volume	Level	Type	Role	Number
18006 - WDK - 02 - XX - DR - A - 12050						
Internal Project Reference: 170071						
Suitability Suitable For: S0 - Initial Stage or WIP						
Scale:	Created:	Revision:				
A0 @ 1:		C02				
Project Lead:	Drawn:	Checked:				
SMH						
Reviewed:	Approved for Issue:					

Waldeck
 Digital Strategy. Consultancy Solutions.

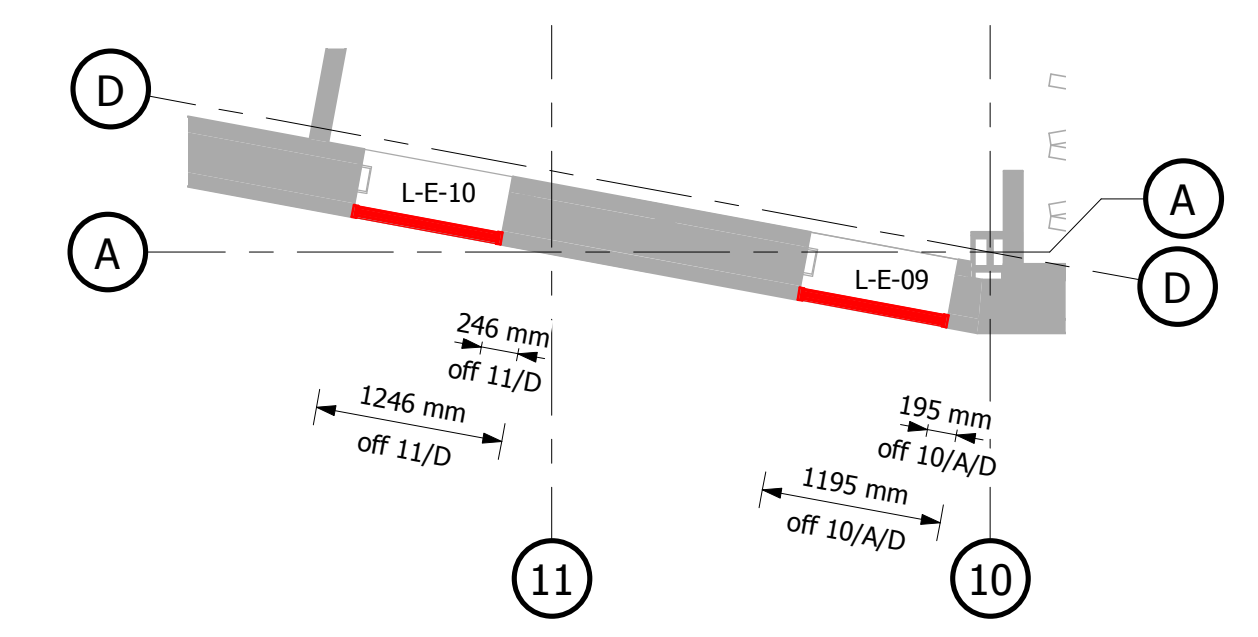
Offices and Projects UK wide
 The Glen
 Hather Road
 Newark
 NG24 1FB
 01636 858 295



LOUVRES-E-Structure
1 : 50



LOUVRES-NE-Structure
1 : 50



Louvres Plan - NE - 1F/2F
1 : 50

© 2018 WALDECK

1. These drawings are copyright and the property of Waldeck Associates Ltd. Copying of the designs drawings or intellectual property in full or in part is not permitted without the written consent of a Director of Waldeck Associates Ltd. In the event of a default by the Employer of its obligations due to Waldeck Associates Ltd neither it or its assignees or beneficiaries are permitted to use or copy this information until such time as the Employer has remedied its default and the Consultant gives written consent to reinstatement of its permission or licence to use its materials.

2. The initial feasibility pre-contract design specification, cost plans, bill of quantities, feasibility studies and all other documents or media whether electronic or hard copy are indicative only and could be subject to changes in statute or other rules and regulations and changes in the Employer's requirements and will be subject to design development, cost plans, bill of quantities, feasibility studies and all other documents or media whether electronic or hard copy at commercial rates. Use of these documents or media shall be entirely at the risk of the person using it. No reliance on these documents or media shall be permitted by Waldeck. Waldeck accepts no responsibility for reliance on these documents or media and it is assumed that the Contractor or Developer or Client has made sufficient provision for design development risk where a full design has not been commissioned. No waiver of this endorsement shall be permitted except in writing and signed by a Director of Waldeck as recorded at Companies House.

3. "Waldeck" is a Trading Style of Waldeck Associates Ltd registered in England and Wales Company N° 3450319.

A - Terracota Tiles Schedule - NE - Feature Wall

Number	Centre lines Width	Centre lines Height	Tile size Length	Tile size Height	Corner	TopCut	Material
6820319	1500	250	1488	238			Alphaton Dunkelrot
6820320	1500	250	1488	238			Alphaton Dunkelrot
6820337	1500	250	1488	238			Alphaton Dunkelrot
6820338	1500	250	1488	238			Alphaton Dunkelrot
6820412	1500	250	1488	238			Alphaton Dunkelrot
6820439	1500	250	1488	238			Alphaton Dunkelrot
6820440	1500	250	1488	238			Alphaton Dunkelrot
6820500	1500	250	1488	238			Alphaton Dunkelrot
6820501	1500	250	1488	238			Alphaton Dunkelrot

1500: 9

6820321	1210	250	1198	238			Alphaton Dunkelrot
6820339	1210	250	1198	238			Alphaton Dunkelrot
6820483	1210	250	1198	238			Alphaton Dunkelrot
6820502	1210	250	1198	238			Alphaton Dunkelrot
8845318	1210	250	1198	238			Alphaton Dunkelrot
8845332	1210	250	1198	238			Alphaton Dunkelrot
8845345	1210	250	1198	238			Alphaton Dunkelrot
8845353	1210	250	1198	238			Alphaton Dunkelrot
8845357	1210	250	1198	238			Alphaton Dunkelrot

1210: 9

6820536	1000	250	988	238			Alphaton Dunkelrot
6820541	1000	250	988	238			Alphaton Dunkelrot
6820542	1000	250	988	238			Alphaton Dunkelrot
6820567	1000	250	988	238			Alphaton Dunkelrot
6820570	1000	250	988	238			Alphaton Dunkelrot
6820588	1000	250	988	238			Alphaton Dunkelrot
7678506	1000	250	988	238			Alphaton Dunkelrot
7678510	1000	250	988	238			Alphaton Dunkelrot
7678562	1000	250	988	238			Alphaton Dunkelrot
7678604	1000	250	988	238			Alphaton Dunkelrot
7681620	1000	250	988	238			Alphaton Dunkelrot
7681628	1000	250	988	238			Alphaton Dunkelrot
7681651	1000	250	988	238	Yes		Alphaton Dunkelrot
7681663	1000	250	988	238	Yes		Alphaton Dunkelrot
7681692	1000	250	988	238			Alphaton Dunkelrot
7681695	1000	250	988	238	Yes		Alphaton Dunkelrot
7681723	1000	250	988	238	Yes		Alphaton Dunkelrot
7681743	1000	250	988	238	Yes		Alphaton Dunkelrot
7681744	1000	250	988	238	Yes		Alphaton Dunkelrot
8569492	1000	250	988	238	Yes		Alphaton Dunkelrot
8569498	1000	250	988	238	Yes		Alphaton Dunkelrot

1000: 21

6820281	910	250	898	238			Alphaton Dunkelrot
6820326	910	250	898	238			Alphaton Dunkelrot
6820335	910	250	898	238			Alphaton Dunkelrot
6820410	910	250	898	238			Alphaton Dunkelrot
6820437	910	250	898	238			Alphaton Dunkelrot
6820479	910	250	898	238			Alphaton Dunkelrot
6820498	910	250	898	238			Alphaton Dunkelrot

910: 7

6820282	600	250	588	238			Alphaton Dunkelrot
6820289	600	250	588	238			Alphaton Dunkelrot
6820322	600	250	588	238			Alphaton Dunkelrot
6820327	600	250	588	238			Alphaton Dunkelrot
6820334	600	250	588	238			Alphaton Dunkelrot
6820336	600	250	588	238			Alphaton Dunkelrot
6820340	600	250	588	238			Alphaton Dunkelrot
6820343	600	250	588	238			Alphaton Dunkelrot
6820411	600	250	588	238			Alphaton Dunkelrot
6820418	600	250	588	238			Alphaton Dunkelrot
6820438	600	250	588	238			Alphaton Dunkelrot
6820445	600	250	588	238			Alphaton Dunkelrot
6820480	600	250	588	238			Alphaton Dunkelrot
6820484	600	250	588	238			Alphaton Dunkelrot
6820487	600	250	588	238			Alphaton Dunkelrot
6820499	600	250	588	238			Alphaton Dunkelrot
6820503	600	250	588	238			Alphaton Dunkelrot
7678528	600	250	588	238			Alphaton Dunkelrot
7678556	600	250	588	238			Alphaton Dunkelrot
7678574	600	250	588	238			Alphaton Dunkelrot
7678590	600	250	588	238			Alphaton Dunkelrot
7678598	600	250	588	238			Alphaton Dunkelrot

600: 22

7681625	465	250	453	238			Alphaton Dunkelrot
7681633	465	250	453	238			Alphaton Dunkelrot
7681653	465	250	453	238			Alphaton Dunkelrot
7681681	465	250	453	238			Alphaton Dunkelrot
7681713	465	250	453	238			Alphaton Dunkelrot
7681729	465	250	453	238			Alphaton Dunkelrot
7681737	465	250	453	238			Alphaton Dunkelrot
7681745	465	250	453	238			Alphaton Dunkelrot
7681754	465	250	453	238			Alphaton Dunkelrot

465: 9

8845317	215	250	203	238			Alphaton Dunkelrot
8845323	215	250	203	238			Alphaton Dunkelrot
8845339	215	250	203	238			Alphaton Dunkelrot
8845346	215	250	203	238			Alphaton Dunkelrot

215: 4

6820292	1500	250	1488	238			Alphaton Eisengrau
6820293	1500	250	1488	238			Alphaton Eisengrau
6820328	1500	250	1488	238			Alphaton Eisengrau
6820329	1500	250	1488	238			Alphaton Eisengrau
6820269	1500	245	1488	233		Yes	Alphaton Eisengrau

1500: 5

6820538	1000	250	988	238			Alphaton Eisengrau
7678504	1000	250	988	238			Alphaton Eisengrau
7678514	1000	250	988	238			Alphaton Eisengrau
7681615	1000	250	988	238	Yes		Alphaton Eisengrau
7681616	1000	250	988	238	Yes		Alphaton Eisengrau
7681623	1000	250	988	238	Yes		Alphaton Eisengrau
7681635	1000	250	988	238	Yes		Alphaton Eisengrau
7681636	1000	250	988	238	Yes		Alphaton Eisengrau
7681639	1000	250	988	238	Yes		Alphaton Eisengrau
7681659	1000	250	988	238	Yes		Alphaton Eisengrau
7681671	1000	250	988	238	Yes		Alphaton Eisengrau
7681683	1000	250	988	238	Yes		Alphaton Eisengrau
7681715	1000	250	988	238	Yes		Alphaton Eisengrau
7681731	1000	250	988	238	Yes		Alphaton Eisengrau
7681739	1000	250	988	238	Yes		Alphaton Eisengrau
7681747	1000	250	988	238	Yes		Alphaton Eisengrau
8569472	1000	250	988	238	Yes		Alphaton Eisengrau
8569474	1000	250	988	238	Yes		Alphaton Eisengrau
8569478	1000	250	988	238	Yes		Alphaton Eisengrau
8569484	1000	250	988	238	Yes		Alphaton Eisengrau
8569486	1000	250	988	238	Yes		Alphaton Eisengrau
8569496	1000	250	988	238	Yes		Alphaton Eisengrau
8569508	1000	250	988	238	Yes		Alphaton Eisengrau
8569514	1000	250	988	238	Yes		Alphaton Eisengrau
8569536	1000	250	988	238	Yes		Alphaton Eisengrau
8569540	1000	250	988	238	Yes		Alphaton Eisengrau
8569542	1000	250	988	238	Yes		Alphaton Eisengrau
8845362	1000	250	988	238			Alphaton Eisengrau
8845363	1000	250	988	238			Alphaton Eisengrau

1. The above schedule is for the feature wall and is subject to change without notice. 2. The above schedule is for the feature wall and is subject to change without notice. 3. The above schedule is for the feature wall and is subject to change without notice.

A - Terracota Tiles Schedule - NE - Feature Wall

Number	Centre lines Width	Centre lines Height	Tile size Length	Tile size Height	Corner	TopCut	Material
6820534	1000	245	988	233		Yes	Alphaton Eisengrau
7678497	1000	245	988	233		Yes	Alphaton Eisengrau
7681600	1000	245	988	233	Yes	Yes	Alphaton Eisengrau
7681603	1000	245	988	233	Yes	Yes	Alphaton Eisengrau
8569469	1000	245	988	233	Yes	Yes	Alphaton Eisengrau

1000: 34

6820299	910	250	898	238			Alphaton Eisengrau
6820488	910	250	898	238			Alphaton Eisengrau

910: 2

6820300	600	250	588	238			Alphaton Eisengrau
6820307	600	250	588	238			Alphaton Eisengrau
6820489	600	250	588	238			Alphaton Eisengrau
6820497	600	250	588	238			Alphaton Eisengrau
6820263	600	245	588	233		Yes	Alphaton Eisengrau
6820270	600	245	588	233		Yes	Alphaton Eisengrau

600: 6

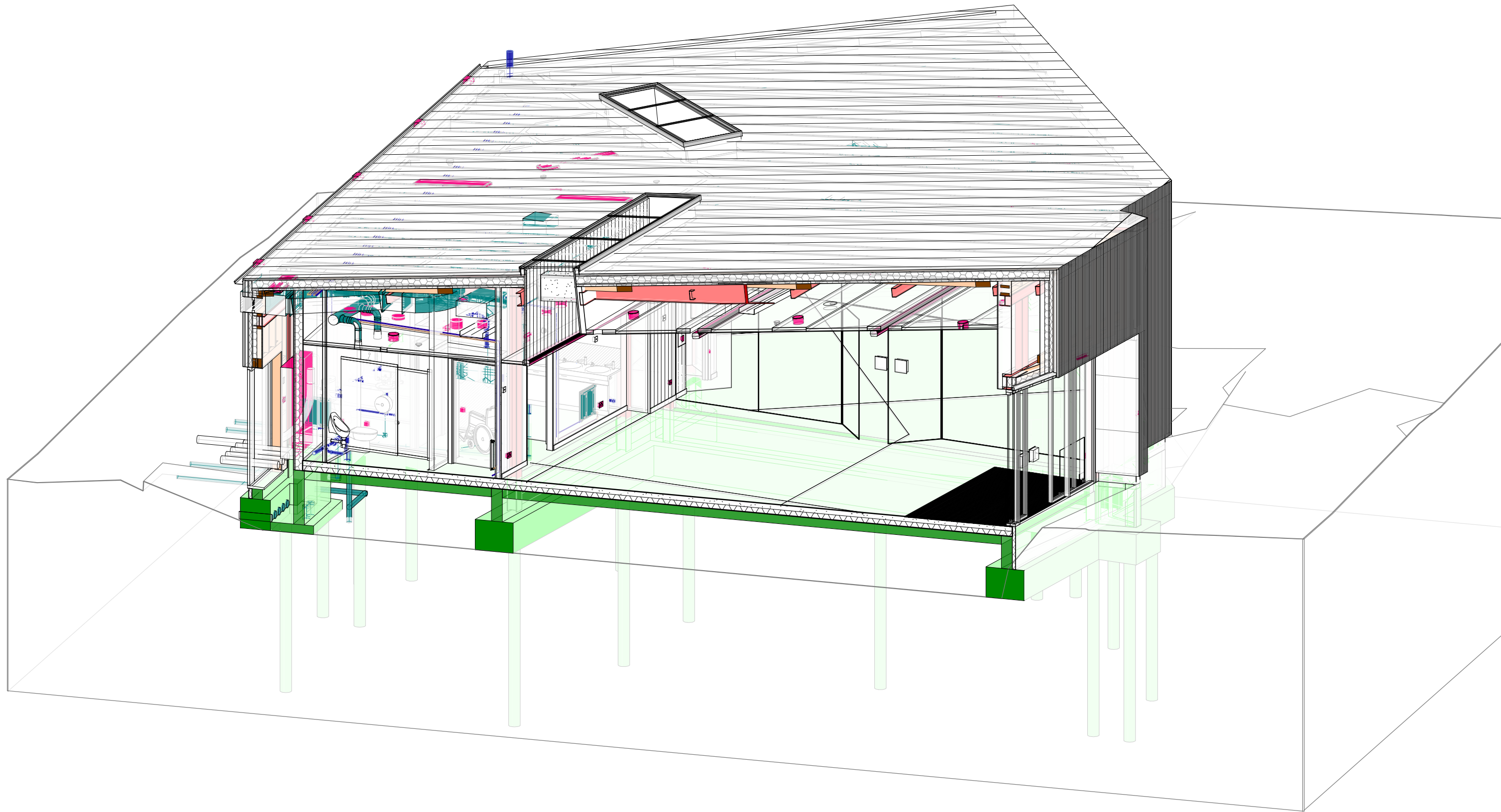
8845305	215	250	203	238			Alphaton Eisengrau
8845306	215	250	203	238			Alphaton Eisengrau
8845308	215	250	203	238			Alphaton Eisengrau
8845311	215	250	203	238			Alphaton Eisengrau
8845312	215	250	203	238			Alphaton Eisengrau
8845321	215	250	203	238			Alphaton Eisengrau
8845331	215	250	203	238			Alphaton Eisengrau
8845336	215	250	203	238			Alphaton Eisengrau
8845358	215	250	203	238			Alphaton Eisengrau
8845360	215	250	203	238			Alphaton Eisengrau
8845364	215	250	203	238			Alphaton Eisengrau

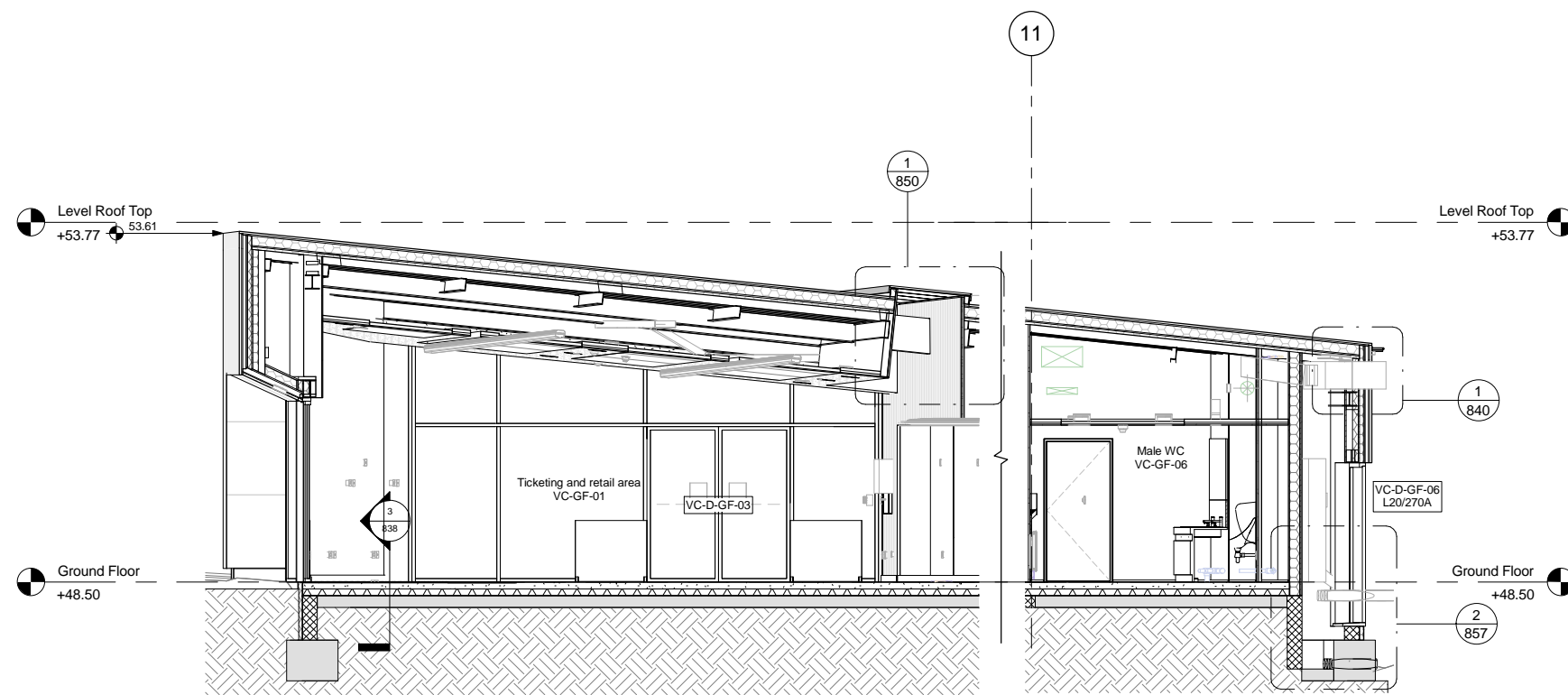
215: 11

6820283	1500	250	1488	238			Alphaton Naturrot
6820284	1500	250	1488	238			Alphaton Naturrot
6820310	1500	250	1488	238			Alphaton Naturrot
6820311	1500	250	1488	238			Alphaton Naturrot
6820346	1500	250	1488	238			Alphaton Naturrot
6820347	1500	250	1488	238			Alphaton Naturrot
6820355	1500	250	1488	238			Alphaton Naturrot
6820356	1500	250	1488	238			Alphaton Naturrot
6820403	1500	250	1488	238			Alphaton Naturrot
6820404	1500	250	1488	238			Alphaton Naturrot
6820413	1500	250	1488	238			Alphaton Naturrot
6820421	1500	250	1488	238			Alphaton Naturrot
6820422	1500	250	1488	238			Alphaton Naturrot
6820430	1500	250	1488	238			Alphaton Naturrot
6820431	1500	250	1488	238			Alphaton Naturrot
6820448	1500	250	1488	238			Alphaton Naturrot
6820449	1500	250	1488	238			Alphaton Naturrot
6820481	1500	250	1488	238			Alphaton Naturrot
6820482	1500	250	1488	238			Alphaton Naturrot

1500: 19

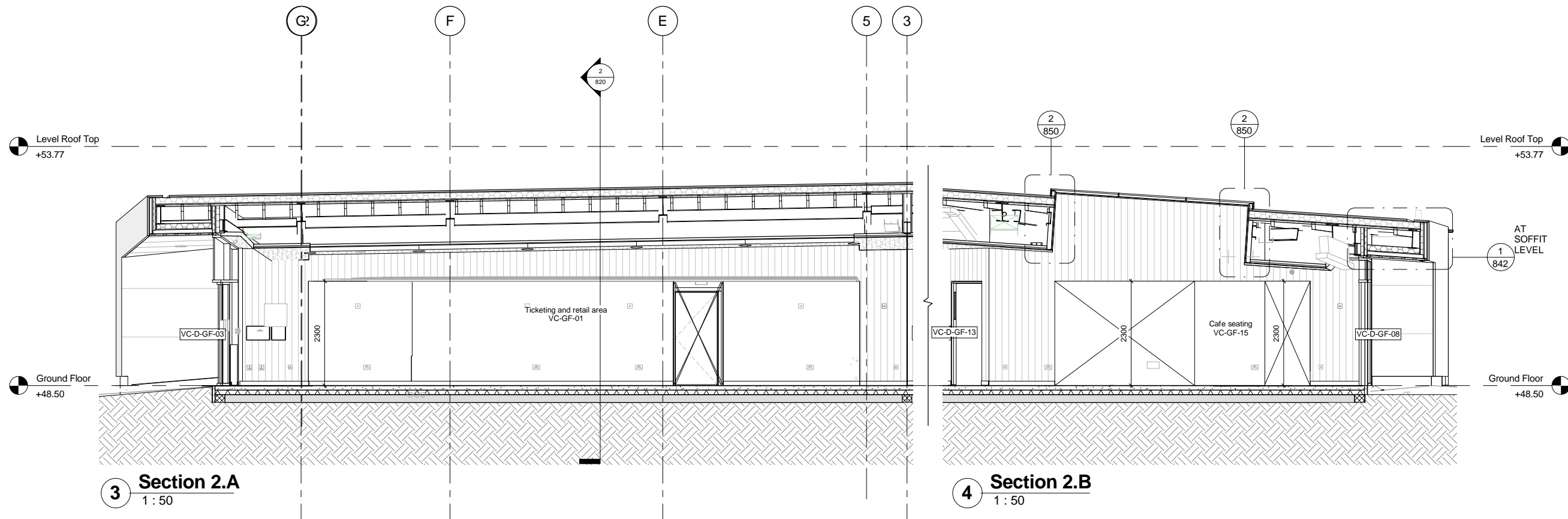
6820285	1210	250	1198	238			Alphaton Naturrot
6820294	1210	250	1198	238			Alphaton Naturrot
6820303	1210	250	1198	238			Alphaton Naturrot
6820312	1210	250	1198	238			Alphaton Naturrot
6820330	1210	250	1198	238			Alphaton Naturrot
6820348	1210	250	1198	238			Alphaton Naturrot
6820357	1210	250	1198	238			Alphaton Naturrot</





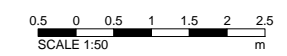
1 Section 1.A
1 : 50

2 Section 1.B
1 : 50

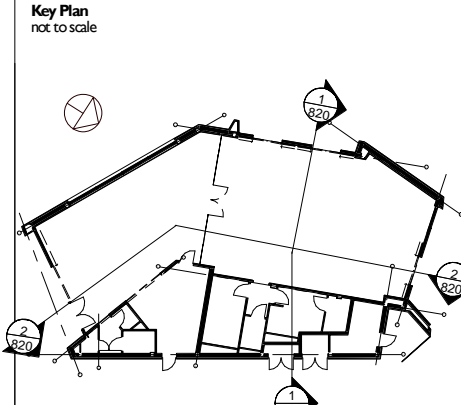


3 Section 2.A
1 : 50

4 Section 2.B
1 : 50



Notes:
 Drawings are based on survey data and may not accurately represent what is physically present.
 Do not scale from this drawing. All dimensions are to be verified on site before proceeding with the work.
 All dimensions are in millimeters unless noted otherwise.
 Purcell shall be notified in writing of any discrepancies.



- NOTES:**
- Drawings to be read in conjunction with the architect's drawn package of works, NBS specifications & schedules.
 - Drawings to be read in conjunction with all other consultant's documentation.
 - All dimensions to be confirmed on site prior to commencement of the works.
 - All discrepancies within the drawn information and specification are to be brought to the architect's attention as soon as they arise.
 - Line of thermal insulation to be complete with no voids and/or gaps present.
 - Ensure that all structure located on line of thermal insulation is fully insulated.
 - Refer to:
 - 800-805 for GA Plans and finishes
 - 806-807 for Internal Wall and Cladding types
 - 810-817 for Sections and elevations
 - 830 for Location of external wall, floor and roof details
 - 831-859 for External wall, floor and roof details
 - 860-861 for Internal partition details
 - 870-879 for Internal elevations
 - 880-885 for Sanitary ware and WC setting out
 - 890-895 for Window and door schedules
 - M&E co-ordination in abeyance pending completion of M&E model
 - Refer to landscape architect, M&E engineer and structural engineer details for landscape, M&E and structural details and specification.



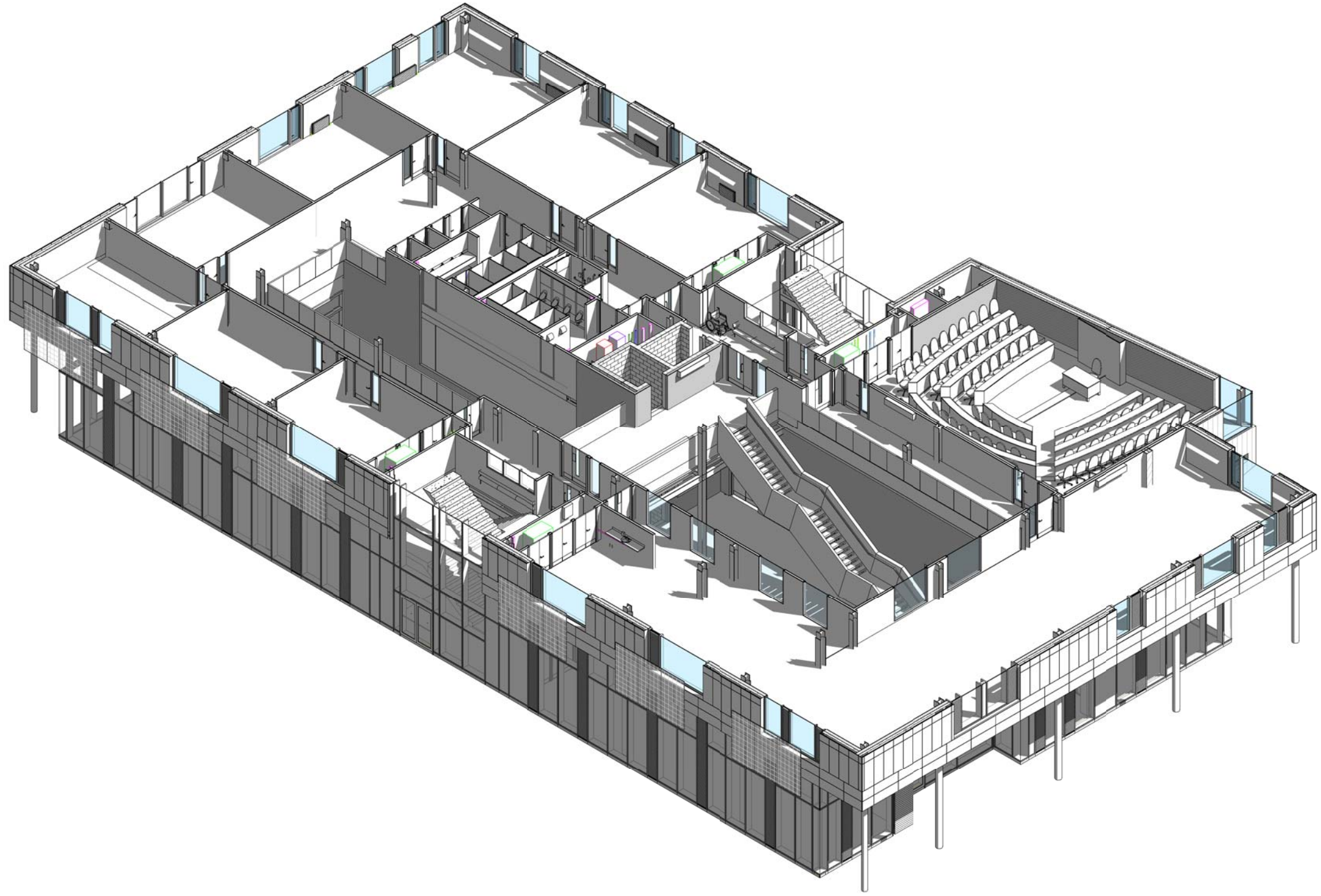
1 | 07/04/17 | LH | Issued for Pre-Tender Estimate

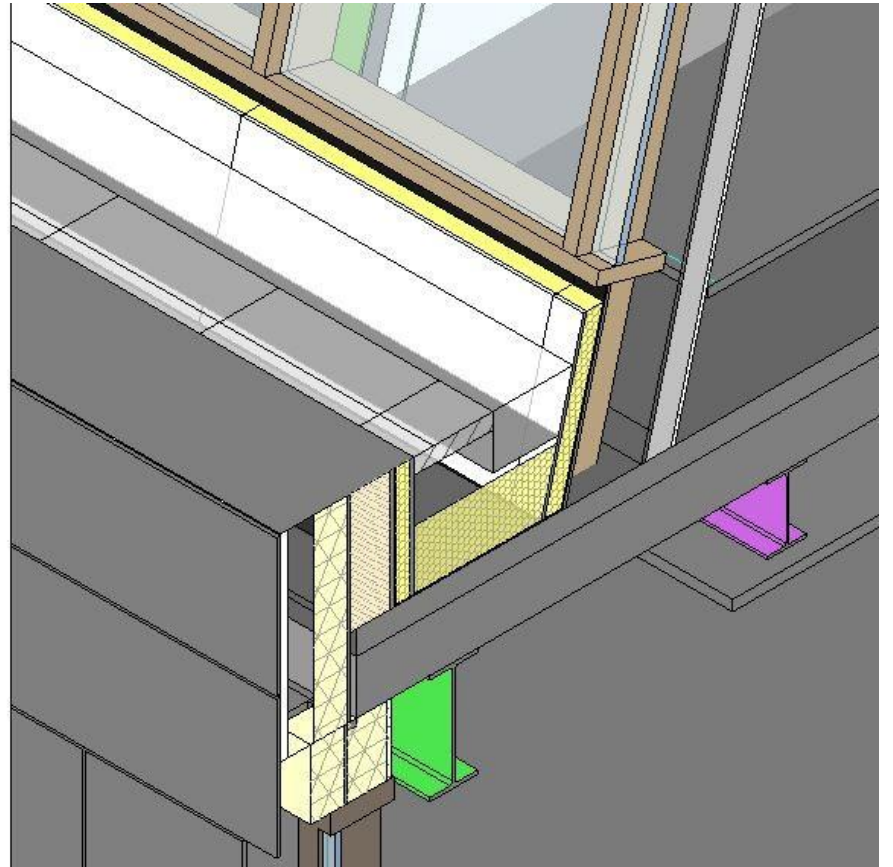
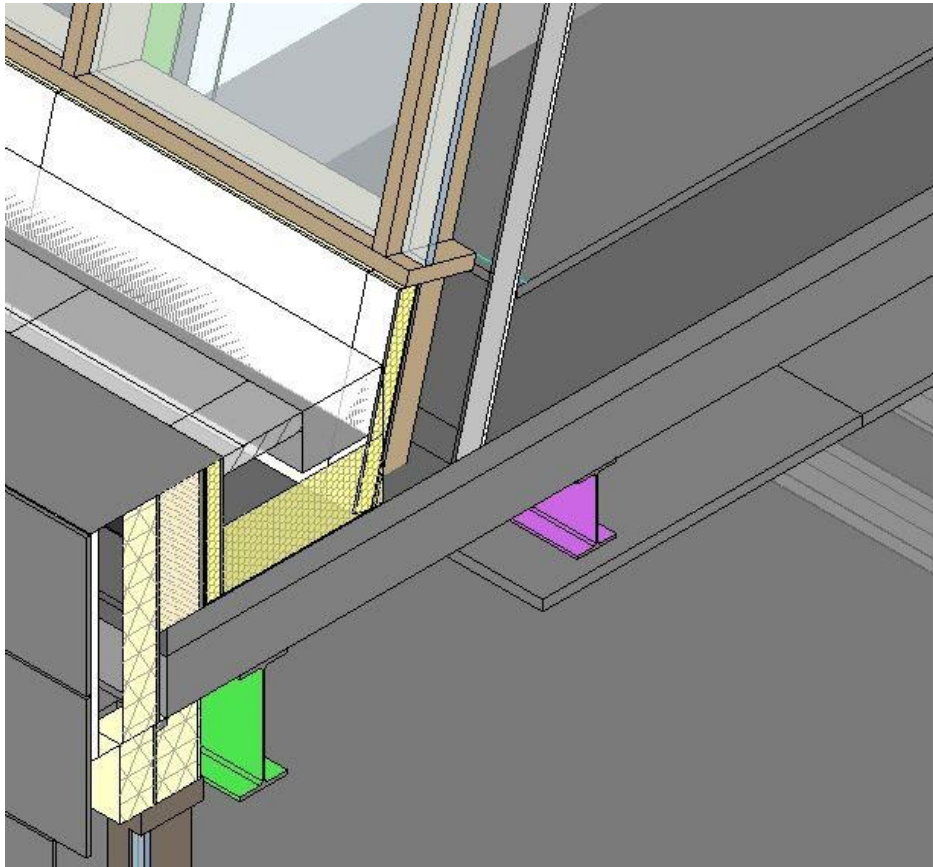
ISSUE	DATE	DRAWN	CHECKED	DESCRIPTION
CLIENT Nottingham City Council				
PROJECT Nottingham Castle Visitor Centre				
DRAWING TITLE Sections 1 & 2 Sheet 1 of 2				
SIZE & SCALE 1:50 @ A1				
DRAWING STATUS For Pre-Tender Estimate				

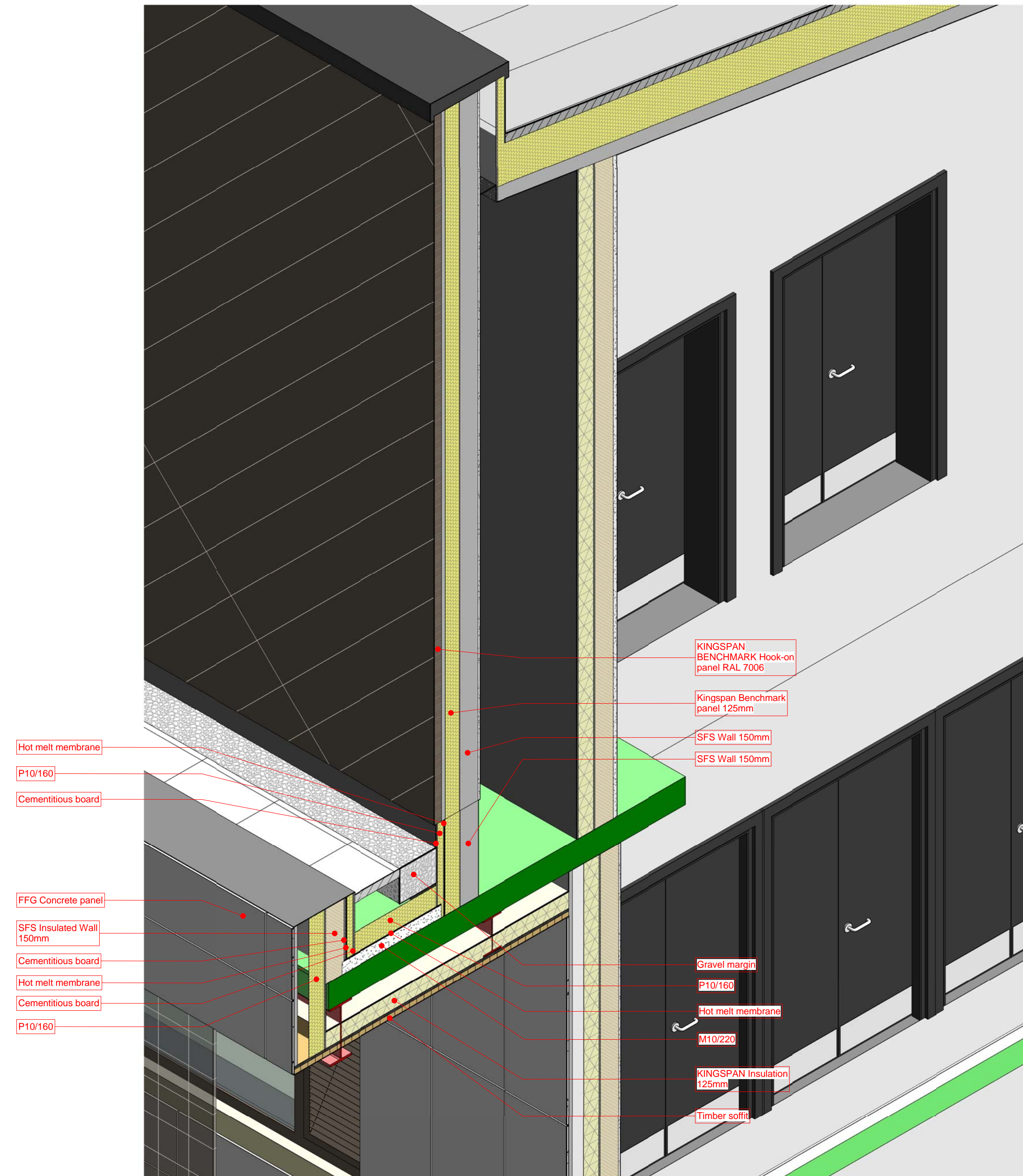
JOB NUMBER 235350/1

DRAWING NO.
NOC-PUR-VC-XX-DRW-A-820-P1

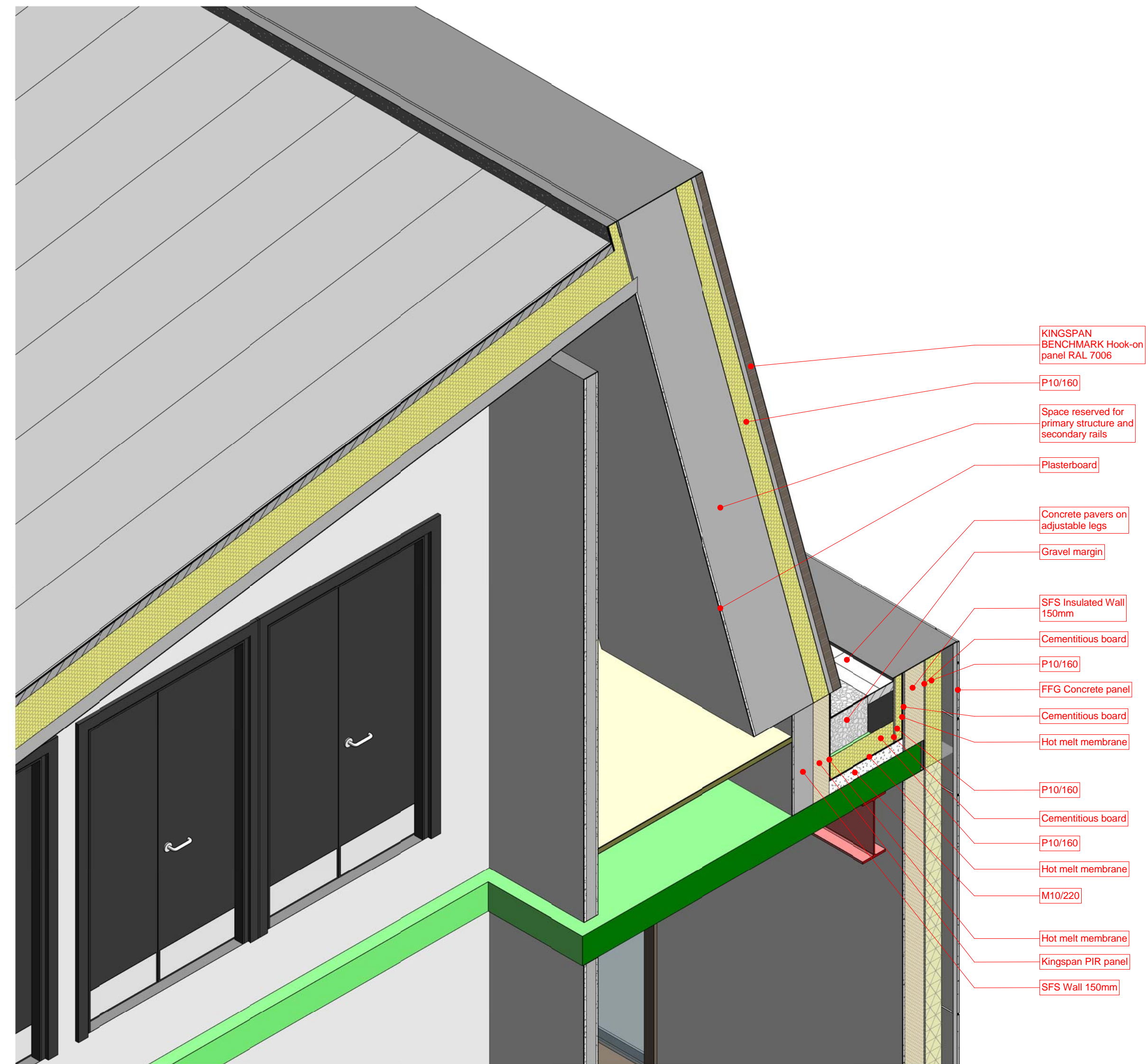
REVISION 1







2 3D - South Parapet-Karrier Facade



1 3D - North Parapet-Karrier Facade

