

BODYCENTRAL

BODYCENTRAL.COM
SPRING 2014 VOLUME 3
COVER LOOK, SEE BACK COVER

3 WAYS TO SHOP
CATALOG | ONLINE | IN-STORE

A. Aztec Kimono. This chiffon kimono features a sunny Aztec print and a sharkbite hem. Domestic poly. Sizes S, M, L. Blue Aztec. **8217 \$22.98.**

B. Convertible Jersey Cami. Solid jersey cami with a sweetheart neckline and padded bra cups. Can be worn with or without adjustable shoulder straps. Imported nylon/spandex. Sizes S/M, M/L. Mint, taupe, red, black, white, yellow, coral. **7731 \$7.98.**



C. Maxi Skirt. Lightweight maxi skirt that goes with everything. Slight ruching at the waist. Pulls on. 40" in length. Domestic rayon/spandex. Sizes S(1-3), M(5-7), L(9-11). White, black, lime green, pink, green, blue, coral, taupe, heather grey, teal. **5834 \$16.98.**

MAXIS
FROM

\$16.98

A - C

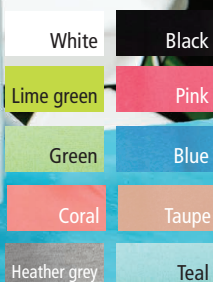
BODY CENTRAL
EXCLUSIVE

DESIGNED BY BODY CENTRAL
JUST FOR YOU



LOOK FOR THIS SYMBOL TO FIND
**NEW BODY CENTRAL
EXCLUSIVES!**

C



TRULY MADLY MAXI



D



F



E



G

D. Ruffle Bottom Hi Low Dress. Ribbon detail at bottom. 26"-39" from center back. Imported rayon. Sizes S(1-3), M(5-7), L(9-11). Peach, white. **7660 \$22.98.**

E. Wave Crochet Maxi Dress. Features beautiful wave crochet with a subtle shine. Removable belt. Slips on. 49" from center back. Imported poly. Sizes S(1-3), M(5-7), L(9-11). Black, tan. **8087 \$29.98.**

F. Multi-stripe Racerback Maxi Dress. Scoop neck tank dress. Slips on. 53" from highest point on shoulder. Imported poly. Sizes S(1-3), M(5-7), L(9-11). Fuchsia/orange stripe. **7475 \$19.98.**

G. Tropic Beauty Challis Dress. Solid tube top dress with bold floral challis print and hi low hemline. Belt included. 27"-48" from center back. Imported poly/rayon. Sizes S(1-3), M(5-7), L(9-11), XL(11-13). Multicolor/black. **7530 \$26.98.**

Front Cover



HANDBAGS
FROM
\$19.98

SPRING DETAILS

\$24.98
DRESS

D

A. Studded Tote. With stud trim on one side. Tote handles and shoulder strap (attached). Interior lining. Interior: Two open pockets and one zip. Dimensions: 14"W X 12½"H; shoulder strap length: 10"; tote handles: 7". Imported man-made materials. Camel, red, blue. **6179 \$36.98.**

B. Small Faux Crocodile Tote. Interior lining. Interior: Two open pockets and one zip. Dimensions: 12"W X 9"H X 5½"D; shoulder strap drop length: 12½"; tote handles: 7". Imported man-made materials. Natural. **7339 \$19.98.**

C. Small Cross Hatch Tote. Faux leather. Interior lining. Interior: Two open pockets and one zip. Dimensions: 12"W X 9"H X 5½"D; shoulder strap drop length: 12½"; tote handles: 7". Imported man-made materials. Teal, coral, pink. **7340 \$19.98.**

D. Baroque Sweetheart Tank Dress. Baroque-inspired dress with lining. Pulls on. 32" from highest point on shoulder. Domestic nylon/spandex. Sizes S(1-3), M(5-7), L(9-11). Light pink, ivory. **7667 \$24.98.**



C





A

DRESSED TO
THRILL

B



C



DRESSES FROM

D



\$19.98

E



A. Totally Twisted Ruched Tank Dress. Stunning tank dress with macrame back detail. 33" from highest point on shoulder. Imported poly/spandex. Sizes S(1-3), M(5-7), L(9-11). Coral. **7661 \$24.98.**

B. Studded Sleeve One Shoulder Dress. Ruched sides. Lined. 33" from highest point on shoulder. Domestic poly/spandex. Sizes S(1-3), M(5-7), L(9-11). Ivory, sapphire blue, fuchsia. **7346 \$29.98.**

C. Cutaway Collar Bandage Dress. Cage neckline bandage dress. Lightly padded bodice. Hidden back zip.

35" from highest point on shoulder. Imported rayon/nylon/spandex. Sizes 3-13. Red, blue. **6756 \$29.98.**

D. Dolman Sleeve Fitted Dress. This dolman sleeve dress can be worn as a one-shoulder. 35" from highest point on shoulder. Domestic poly/spandex. Sizes S (1-3), M (5-7), L (9-11). Red, black. **8118 \$19.98.**

E. One Shoulder Ruched Dress. One shoulder and ruching down both sides. Pulls on. Fully lined. 31" from highest point on shoulder. Imported. Self: poly/spandex, lining: poly. Sizes S(1-3), M(5-7), L(9-11). Coral. **7477 \$24.98.**

A



B



DRESSES
FROM
\$19.98

B – C



D



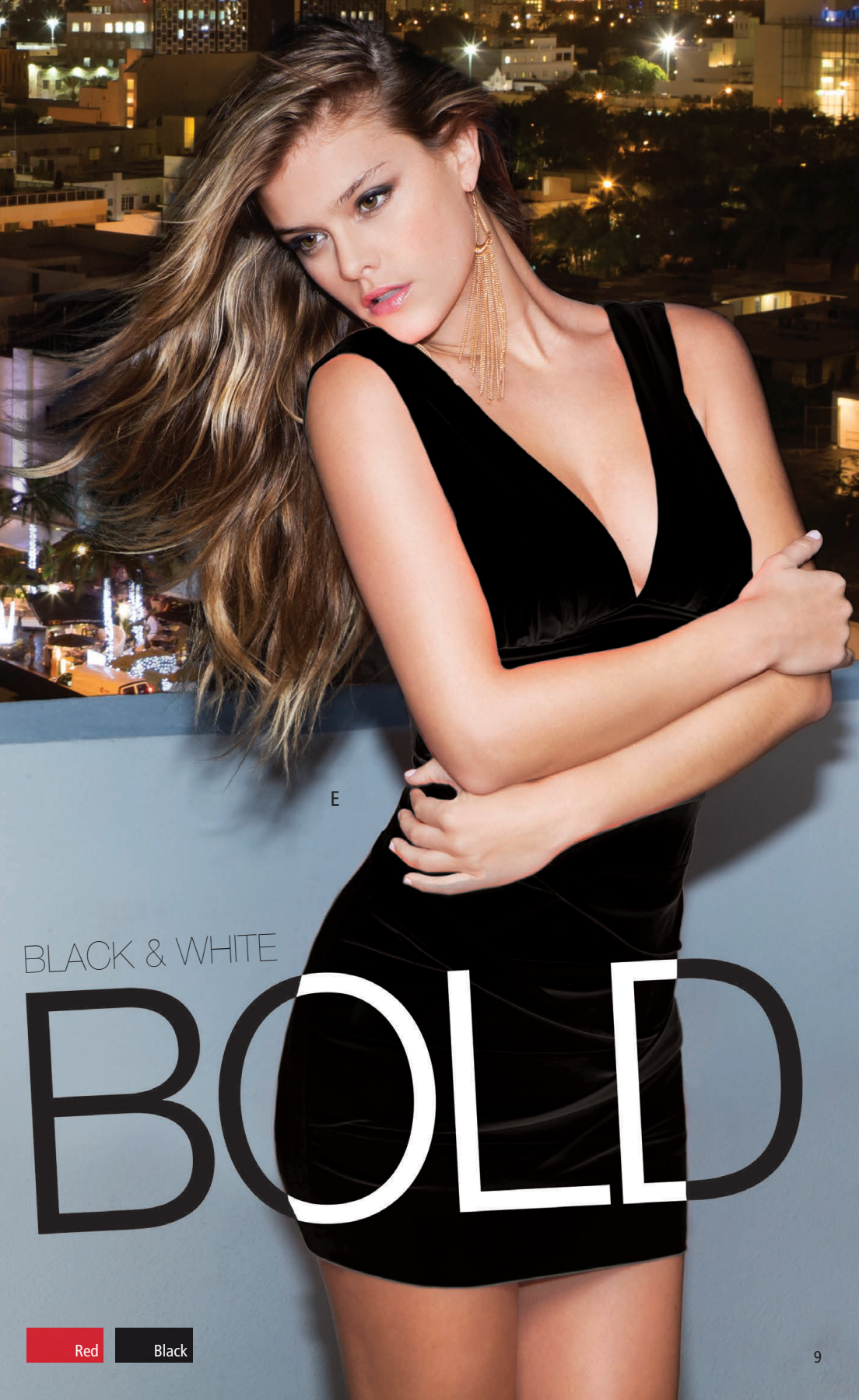
A. Opposites Attract Peplum Dress. 23" from center back. Domestic poly/rayon/spandex. Sizes S(1-3), M(5-7), L(9-11). Black/white. **8310 \$19.98.**

B. Common Thread Open Back Dress. Bodycon dress with ruching at sides and open back details. Lined. 34" from highest point on shoulder. Imported poly/spandex. Sizes S(1-3), M(5-7), L(9-11). Black, sapphire blue. **7662 \$24.98.**

C. Body Chain. Chain link body chain has a chain that goes around neck and lower back. Adjustable lobster claw closure at neck and back. Gold. **7845 \$5.98.**

D. Colorblock Textured Knit Dress. Sweetheart neckline. Fully lined. Hidden zipper at back. 33" from highest point on shoulder. Imported poly/spandex. Sizes S(1-3), M(5-7), L(9-11), XL(11-13). Black/white. **7585 \$24.98.**

E. Twist & Chic Bodycon Dress. Double v-neck with lightly padded cups. Bodycon skirt has bandage detail at the front and a ruched back. Slips on. 32" from highest point on shoulder. Imported poly/spandex. Sizes S(1-3), M(5-7), L(9-11). Black, red. **7025 \$32.98.**



E

BLACK & WHITE

BOLD

Red

Black

TAKE IT TO THE WEDGE

FROM
\$32.98



A. Braided T-Strap Wedge Sandal. 6" heel, 2" platform. Imported man-made materials. Sizes 6-11. Brown. **8160 \$32.98.**

B. Crochet Wrap Wedge. 5½" heel, 1½" platform. Imported canvas. Sizes 6-11. Natural. **8161 \$34.98.**

C. Floral Cutout Open Toe Wedge Sling Back. 5" heel, 1" platform. Imported man-made materials. Sizes 6-10, 5½-8½. Coral, mint. **8616 \$32.98.**

D. Peep-Toe Buckled Wedge. 5" wedge heel. 1½" platform. Imported. Sizes 6-10; 6½-8½. Camel, natural, black. **6805 \$32.98.**

Camel

E. Thong Sandal. Gold hardware. Imported man-made materials. Sizes 6-11. Black, brown. **7368 \$14.98.**

F. Metallic Braid Thong Sandal. Zip back. Imported man-made materials. Sizes 6-11. Black/gold, camel/gold. **7369 \$14.98.**



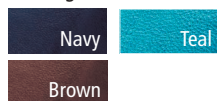
G. Aztec Necklace. Gold. **7857 \$13.98.**



SANDALS
FROM
\$9.98



H. Front Buckle Thong Sandal. Zip back. Imported man-made materials. Sizes 6-11. Navy/gold, teal/gold, brown/gold. **7392 \$14.98.**



I. Multi-chain Stone Necklace. Silver. **7640 \$15.98.**

J. Braid Thong Sandal. Zip back. Imported man-made materials. Sizes 6-11. Coral, mint, taupe. **7390 \$9.98.**

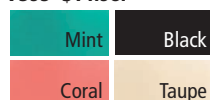


K. Faceted Stone and Rhinestone Necklace. Black. **7638 \$15.98.**

L. Stone Cluster Necklace. Gold. **7855 \$13.98.**

M. Glitter Swirl Detailed Flip Flop. Imported man-made materials. Sizes 6-11. Gold, black. **7376 \$9.98.**

N. Strappy Rhinestone Wedge Sandal. Crystal-embellished faux suede upper with 1" wedge heel. Rubber sole. Slips on. Imported man-made materials. Sizes 6-11. Mint, black, coral, taupe. **7395 \$14.98.**



O. Mixed Stone Statement Necklace. Mint. **7646 \$13.98.**

P. Bow Front Flip Flop. Imported man-made materials. Sizes 6-11. Fuchsia, turquoise. **7385 \$9.98.**



Q. Gemstone Collar Necklace. Multicolor. **7647 \$13.98.**

SHORT & SEXY

**A. Four Button High Waist
Cuffed Short.** 2½" inseam.
Imported cotton/spandex. Sizes
1-13. White, black, coral.
7995 \$19.98.

White

Black

Coral

BODY CENTRAL
EXCLUSIVE

DESIGNED BY BODY CENTRAL
JUST FOR YOU



LOOK FOR THIS SYMBOL TO FIND
**NEW BODY CENTRAL
EXCLUSIVES!**

Dark denim

Light denim

Acid wash



B



C

HIGH
WAIST
SHORTS
FROM

\$19.98



D



E

B. Four Button High Waist Cuffed Short. 2½" inseam Imported cotton/poly/rayon/spandex. Sizes 1-13. Dark denim, acid wash, light denim. **8150 \$19.98.**

C. High Rise Fray Hem Leopard Print Short. 2½" inseam. Imported cotton/spandex. Sizes 0-13. Brown print. **7998 \$19.98.**

D. High Rise Ripped and Torn Short. Dark denim short with sandblast and destructed detailing at front. Frayed hem. 2" inseam. Imported poly/rayon/spandex. Size 1-13. Dark denim. **7996 \$19.98.**

E. High Waist Acid Wash Denim Short. Zipper closure at left side. 2" inseam. Imported cotton/poly/spandex. Sizes 0-13. Novelty denim/acid wash. **7999 \$19.98.**

A - B

TEES
FROM

\$5.98

A. V-Neck Striped Tee. Cap sleeve. Imported cotton/poly/spandex. Sizes S, M, L. Orange, navy/green. **7445 \$7.98.**

Orange

Navy

B. Four Button High Waist Cuffed Short. Stacked waist short features four front button closure. Roll the cuffs for a sexy weekend look. 2" inseam. Imported cotton/poly/rayon/spandex. Sizes 1-13. Dark denim, light denim, novelty/acid wash. **8150 \$19.98.**

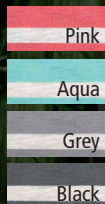
Dark denim

Light denim

Acid wash

C. Stripe Scoop Neck High Low Tee.

Short sleeve shirt in a fun spring stripe. Imported cotton/rayon. Sizes S, M, L. Pink, aqua, grey, black. **8137 \$7.98.**



D. Spring Stripe V-Neck Tee. Imported cotton. Pink/ yellow/mint/ coral stripe. Sizes S, M, L. **8141 \$12.98.**

E. Pastel Striped V-Neck Tee.

Imported cotton. Sizes S, M, L. Yellow/ mint/grey. **8142 \$12.98.**



F. Nautical Stripe V-Neck Tee. Imported cotton. Sizes S, M, L. Red/navy/ grey/white stripe. **8143 \$12.98.**

G. Scoop Neck Striped Tee.

Cap sleeve scoop tee offers comfort for all-day casual wear. Heather grey/ white, yellow/ turquoise. Imported cotton/spandex. Sizes S, M, L. **7444 \$7.98.**



H. Scoop Neck Tee. This super soft, longer length tee features a scooped neckline and cap sleeves. Imported cotton/spandex. Sizes S, M, L. Black, blue, coral, dark grey, mint, pink, red, taupe. **5715 \$5.98.**



LINEN SHORTS
\$10.98

A. Linen Short. Zip front and button closure. Front and back pockets. 2½" inseam. Imported linen. Sizes S(1-3), M(5-7), L(9-11). Black, coral, sand, turquoise, white. **7850 \$10.98.**



B - D

LIVE *in* LINEN

A

LINEN PANTS

\$16.98

B. Neon Tribal Cropped Tank. Spring crop top with bright screen print graphic. Imported poly/rayon. Sizes S, M, L, XL. Black. **7793 \$12.98.**

C. Linen Pant. Lay back in this pleat-front pant. 32" inseam; 26" inseam rolled. Imported linen. Sizes S(1-3), M(5-7), L(9-11) XL(11-13). Taupe, white, coral, khaki. **7679 \$16.98.**

D. Center Braid Sandal. Multi strand sandal with center front thong detail. Imported man-made materials. Sizes 6-11. Black, camel. **7394 \$12.98.**

A



TEES

C



B



A. Colorblock Racerback Tank. Colorblock racerback tank. Scoop neck. Sizes S, M, L. Coral, fuchsia. **7730 \$9.98.**

Fuchsia/navy

Coral/brown

B. Paint Stripe Racerback Tank. Fun tank features thin straps and a racerback. Imported rayon/spandex. Sizes S, M, L. Orange/blue/green/white/tan, green/fuchsia. **7723 \$9.98.**

Orange/blue

Green/fuchsia

ME!



TEES & TANKS
FROM

\$7.98

C. Jersey Scoop Neck Tank.
Imported cotton/spandex. Sizes S,
M, L. Fuchsia, black, navy, orange,
red, white. 7227 \$7.98.



AXI

F



Smart phone
users, scan
here for more
new arrivals!



BODY CENTRAL
6225 Powers Avenue, Jacksonville, FL 32217
1-800-746-1044

BODYCENTRAL.COM

© 2014 Body Central All rights reserved.

PSRT STD
U.S. POSTAGE
PAID
BODY CENTRAL

Source Code

Customer #

Front Cover

oop neck tank
ilder. Imported poly.
stripe. **7475 \$19.98.**

be top dress with
Belt included.
ylon. Sizes S(1-3),
7530 \$26.98.

3



ON OUR BACK COVER:

Boatneck Open Knit Crochet

Top. Lightweight open knit top with banded sleeves. Gorgeous crochet detail with a slight fringe. Imported cotton. Sizes S/M, L/XL. Natural. **7971 \$29.98.**

Strapless Bandeau Bra. Barely-there support with lightly padded, smooth cups. Imported nylon/spandex. Sizes S/M, M/L. White, natural, lime green, purple, yellow. **3874 \$7.98.**

Ripped and Torn Stitch Short.

Thick stitch denim short with destructed detailing at front. 2" inseam. Imported cotton/poly/spandex. Sizes 1-13. Dark denim. **8028 \$19.98.**

*Shot at Raleigh Hotel - Miami Beach, FL.